






# ±10,112 SF

REAL PEOPLE, REAL SOLUTIONS®



## AVAILABLE FOR LEASE

### PROPERTY DETAILS:

- ± 6,500 SF of Office Space
- 400 Amps Power (verify)
- 2 Ground Level Doors
- 14' Warehouse Clear Height
- Fire Sprinklered
- **Fenced Yard Area**
- Located in Anaheim Platinum Triangle, across from Anaheim Stadium and within close proximity to Tile Mile
- Immediate Freeway Access to , , ,  & 



2131 S. DUPONT DRIVE  
ANAHEIM, CA

Southern California's Premier  
Real Estate Marketing Team

**Voit**  
REAL ESTATE SERVICES

**THE ZEHNER  
DAVENPORT**  
INDUSTRIAL GROUP



**SETH DAVENPORT**  
Senior Vice President  
714.935.2376  
sdavenport@voitco.com  
Lic#01413387



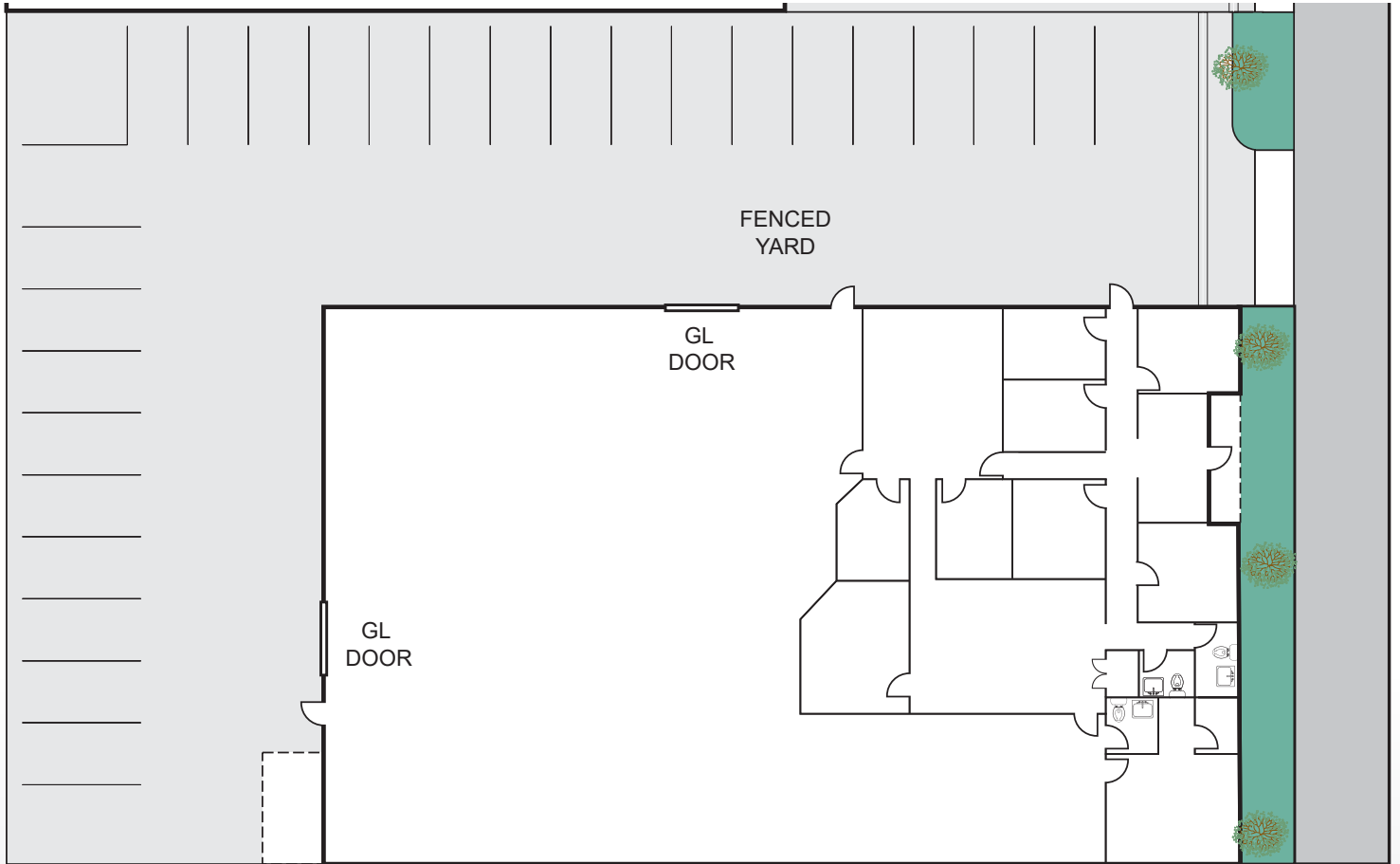
**MITCH ZEHNER**  
Executive Vice President  
714.935.2307  
mzehner@voitco.com  
Lic#00882464



**ADAM HILL**  
Associate  
714.935.2311  
ahill@voitco.com  
Lic#01970562

# AVAILABLE FOR LEASE - ± 10,112 SF

2131 S. DUPONT DRIVE  
ANAHEIM, CA



\* Site Plan Not to Scale

**Voit**  
REAL ESTATE SERVICES

THE ZEHNER  
DAVENPORT  
INDUSTRIAL GROUP

Southern California's Premier  
Real Estate Marketing Team



**SETH DAVENPORT**  
Senior Vice President  
714.935.2376  
sdavenport@voitco.com  
Lic#01413387



**MITCH ZEHNER**  
Executive Vice President  
714.935.2307  
mzehner@voitco.com  
Lic#00882464



**ADAM HILL**  
Associate  
714.935.2311  
ahill@voitco.com  
Lic#01970562