

±12,480 SF

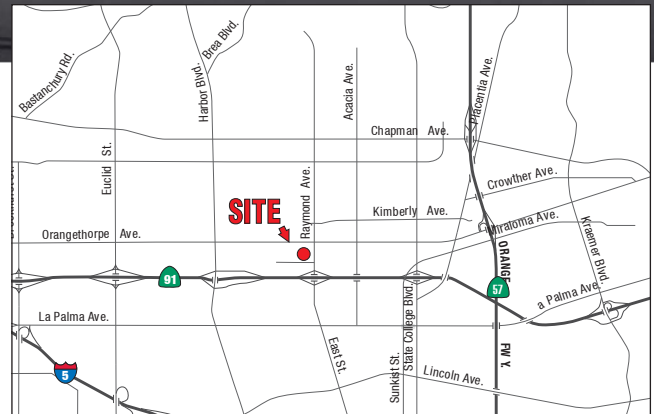
REAL PEOPLE, REAL SOLUTIONS®



AVAILABLE FOR LEASE

PROPERTY DETAILS:

- ± 5,800 Square Feet of Office / Lab Area
- 2 Separate Tech / Lab Rooms
- 18' Warehouse Clearance
- 400 Amps 277/480 Power
- 4 Ground Level Doors
- Large Fenced Yard
- Business Park Environment
- Fully Fire Sprinklered
- Immediate Access to Riverside (91) & Orange (57) Freeways



995 E. DISCOVERY LANE
ANAHEIM, CA

Southern California's Premier
Real Estate Marketing Team

MITCH ZEHNER
Executive Vice President
714.935.2307
mzehner@voitco.com
Lic#00882464

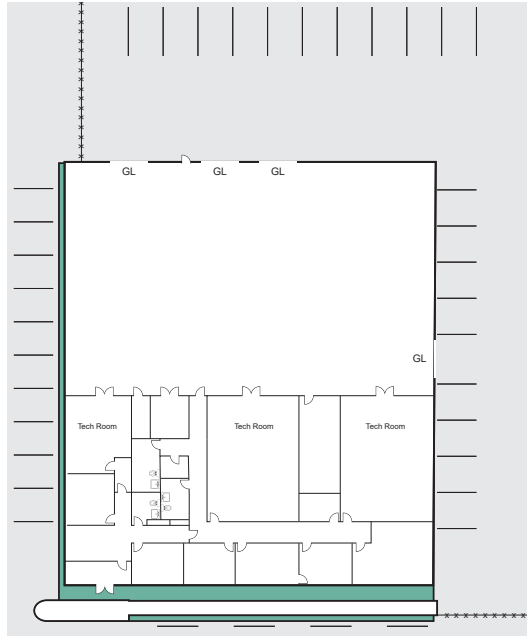
SETH DAVENPORT
Executive Vice President
714.935.2376
sdavenport@voitco.com
Lic#01413387

Voit
REAL ESTATE SERVICES

**THE ZEHNER
DAVENPORT**
INDUSTRIAL GROUP

FOR LEASE ±12,480 SF

995 E. DISCOVERY LANE, ANAHEIM



* Floor Plan Not to Scale



MITCH ZEHNER
Executive Vice President
714.935.2307
mzehner@voitco.com
Lic#00882464

SETH DAVENPORT
Executive Vice President
714.935.2376
sdavenport@voitco.com
Lic#01413387

Voit
REAL ESTATE SERVICES

**THE ZEHNER
DAVENPORT**
INDUSTRIAL GROUP