

±10,912 SF



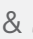
REAL PEOPLE, REAL SOLUTIONS®

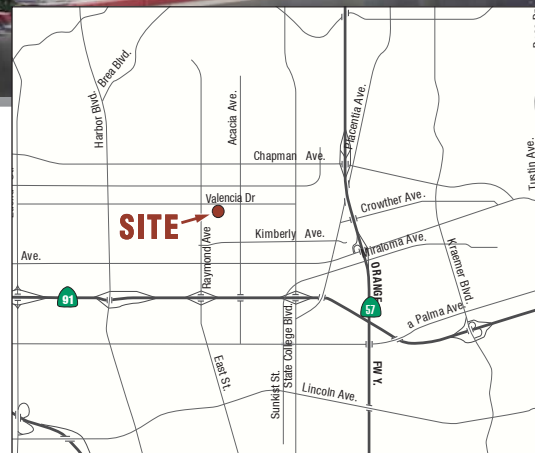


AVAILABLE

FOR SALE

PROPERTY DETAILS:

- ±1,795 SF of Office Space
- ±920 SF of Mezzanine Office
- 22'-25' Warehouse Clear Height
- 1 Grade Level Loading Door (12'x14')
- 400 Amps of 277/480 Volt Power
- 2.7:1 Parking Ratio
- Large Secured Yard
- Fire Sprinklered
- Immediate Freeway Access to ,  & 



575 SALLY PLACE
FULLERTON, CA

Southern California's Premier
Real Estate Marketing Team



SETH DAVENPORT
Senior Vice President
714.935.2376
sdavenport@voitco.com
Lic#01413387



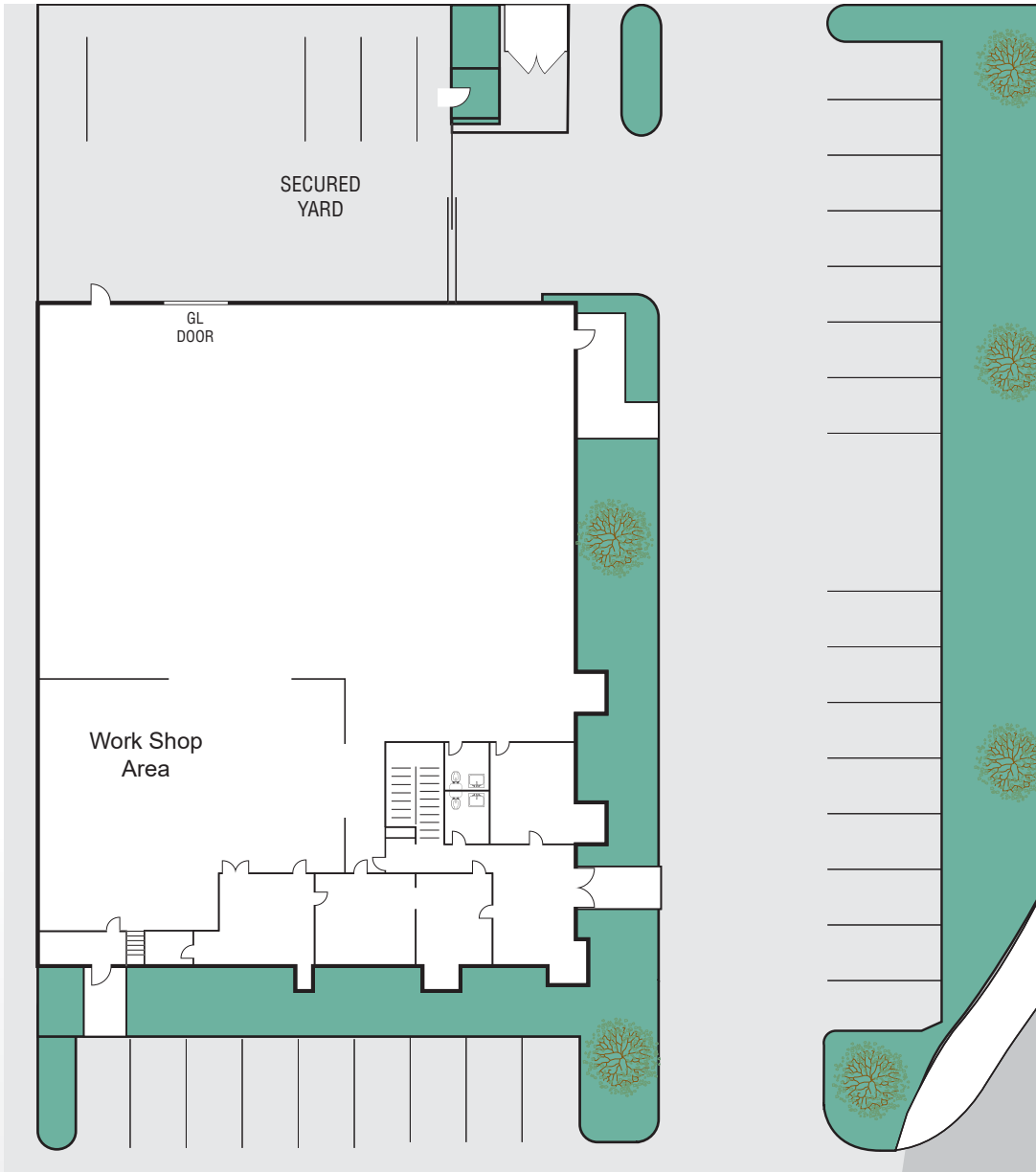
MITCH ZEHNER
Executive Vice President
714.935.2307
mzehner@voitco.com
Lic#00882464

Voit
REAL ESTATE SERVICES

**THE ZEHNER
DAVENPORT**
INDUSTRIAL GROUP

AVAILABLE FOR SALE - ± 10,912 SF

575 SALLY PLACE, FULLERTON, CA



* Site Plan to Scale



Southern California's Premier
Real Estate Marketing Team



SETH DAVENPORT
Senior Vice President
714.935.2376
sdavenport@voitco.com
Lic#01413387



MITCH ZEHNER
Executive Vice President
714.935.2307
mzehner@voitco.com
Lic#00882464

Voit
REAL ESTATE SERVICES

**THE ZEHNER
DAVENPORT**
INDUSTRIAL GROUP