



Deutsche Asset  
& Wealth Management

# Stadium Plaza Business Park

## For Lease | ±34,023 Square Feet



**1560 HARRIS COURT, ANAHEIM, CALIFORNIA**



### FEATURES

- Freestanding Industrial Building
- ±5,304 Square Feet of Office Space
- 5 Ground Level Doors with 1 Exterior Truckwell
- Parking Ratio ±2:1 / In Common
- Fenced Yard Area
- 2,000 Amps 277/480 Volt Electrical (verify)
- 18' Warehouse Clearance (verify)
- Excellent Access to the Freeways
- On Site Property Management
- Close to Retail Amenities
- Business Park Environment
- Low City of Anaheim Utility Costs

[www.StadiumPlazaBusinessPark.com](http://www.StadiumPlazaBusinessPark.com)

**Seth Davenport**

714.935.2376

sdavenport@voitco.com

Lic.#01413387

**Mitch Zehner**

714.935.2307

mzehner@voitco.com

Lic.#00882464

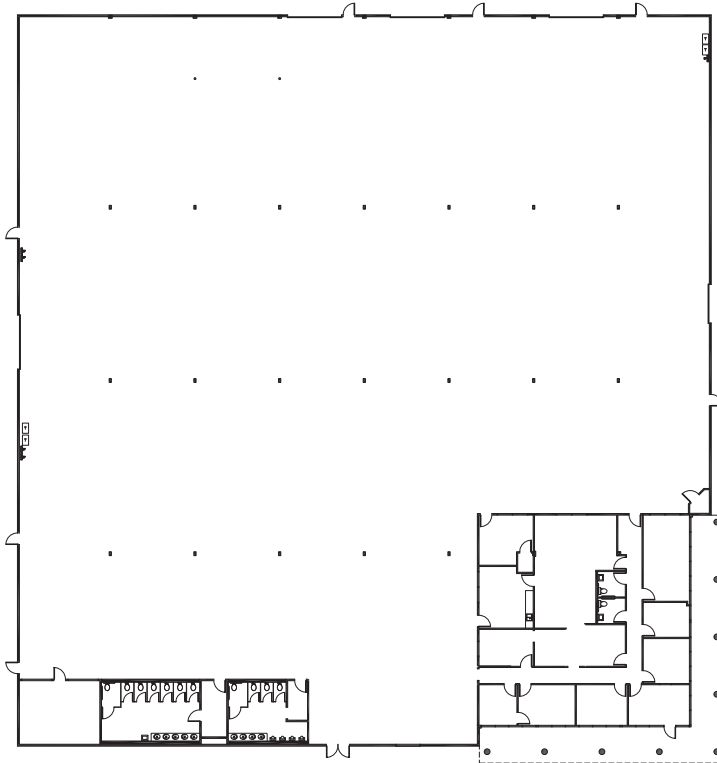
**Voit**  
REAL ESTATE SERVICES

**THE ZEHNER  
DAVENPORT**  
INDUSTRIAL GROUP

2400 E. Katella Avenue, Suite 750, Anaheim, CA 92806  
714.978.7880 Phone | 714.978.8329 Fax | Lic #01333376 | [voitco.com](http://voitco.com) | [zehnergroup.net](http://zehnergroup.net)

Licensed as a Real Estate Broker by the CA Bar of Real Estate. The information contained herein has been obtained from sources we deem reliable. While we have no reason to doubt its accuracy, we do not guarantee it. ©2014 Voit Real Estate Services, Inc. All Rights Reserved. Real People. Real Solutions.® is a registered trademark of Voit Real Estate Services.

# For Lease | ±34,023 Square Feet



**Seth Davenport**  
 714.935.2376  
 sdavenport@voitco.com  
 Lic.#01413387

**Mitch Zehner**  
 714.935.2307  
 mzehner@voitco.com  
 Lic.#00882464



2400 E. Katella Avenue, Suite 750, Anaheim, CA 92806  
 714.978.7880 Phone | 714.978.8329 Fax | Lic #01333376 | voitco.com | zehnergrou.net