

±3,314 SF



REAL PEOPLE, REAL SOLUTIONS®

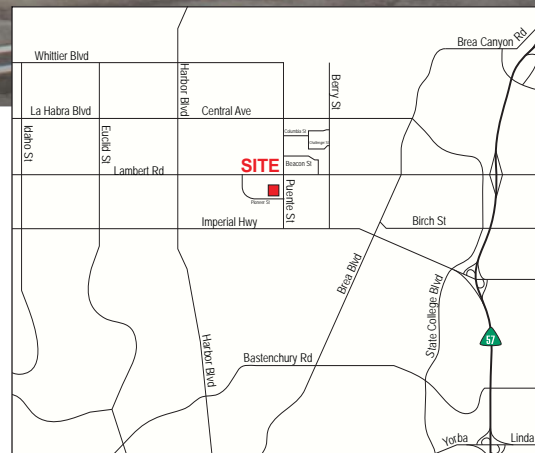


AVAILABLE

FOR SALE

PROPERTY DETAILS:

- High Image Design / Glass Features
- ±2,800 SF of Office Space
- 22' Warehouse Clear Height
- 1 Grade Level Loading Door
- 200 Amps of Power
- Fire Sprinklered
- Newer Construction
- Business Park Environment
- Immediate Freeway Access to  & 



325 N. PUENTE ST., UNIT B
BREA, CA

Southern California's Premier
Real Estate Marketing Team



ADAM HILL
Associate
714.935.2311
ahill@voitco.com
Lic#01970562



SETH DAVENPORT
Senior Vice President
714.935.2376
sdavenport@voitco.com
Lic#01413387

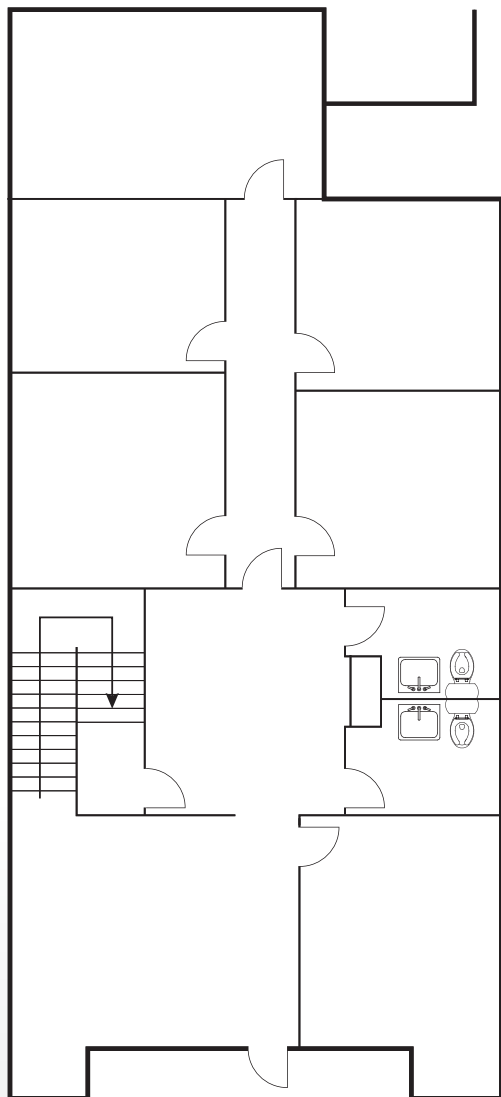
Voit
REAL ESTATE SERVICES

**THE ZEHNER
DAVENPORT**
INDUSTRIAL GROUP

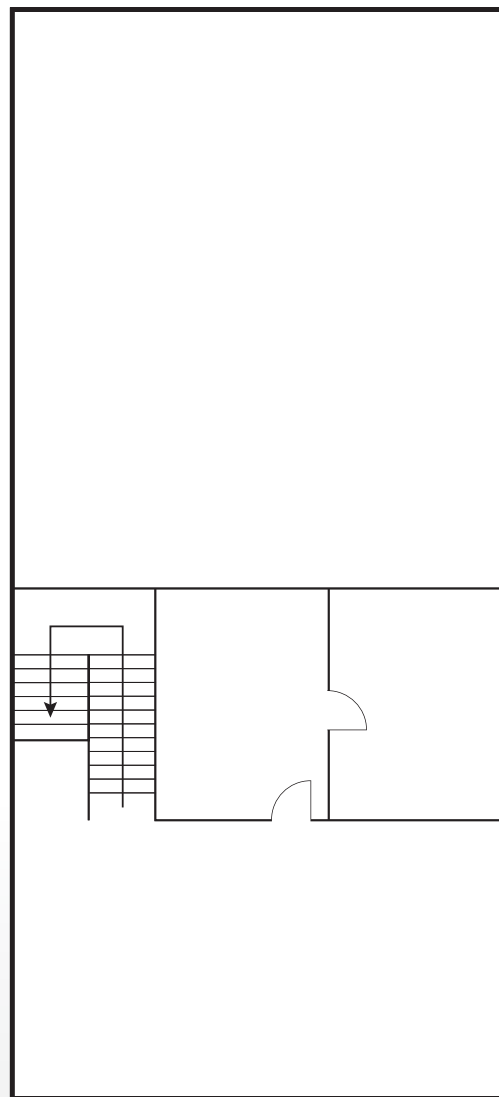
AVAILABLE FOR SALE - ± 3,314 SF

325 N. PUENTE ST., UNIT B, BREA, CA

1st Floor



2nd Floor



Not to Scale*

Southern California's Premier
Real Estate Marketing Team



ADAM HILL
Associate
714.935.2311
ahill@voitco.com
Lic#01970562



SETH DAVENPORT
Senior Vice President
714.935.2376
sdavenport@voitco.com
Lic#01413387

Voit
REAL ESTATE SERVICES

**THE ZEHNER
DAVENPORT**
INDUSTRIAL GROUP