




±7,932 SF

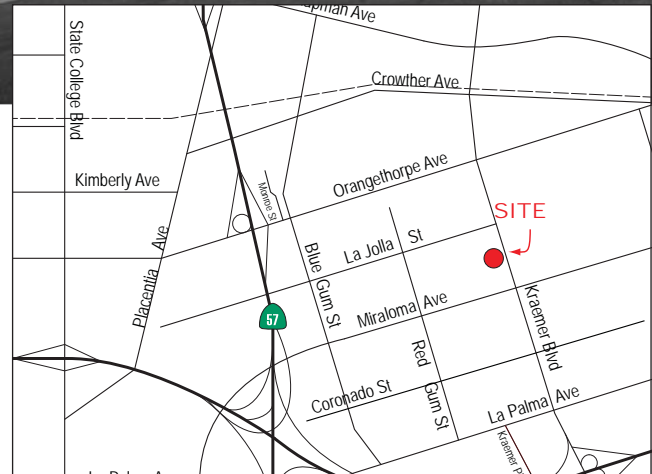
REAL PEOPLE, REAL SOLUTIONS®



AVAILABLE FOR LEASE

PROPERTY DETAILS:

- ± 1,950 SF of Office Space
- 400 Amps Power (verify)
- 2 Ground Level Doors
- Fully Fire Sprinklered
- **LARGE FENCED YARD**
- **Kraemer Blvd. Frontage / Signage**
- Immediate Freeway Access to ,  & 



1381 N. KRAEMER BLVD.
ANAHEIM, CA

Southern California's Premier
Real Estate Marketing Team



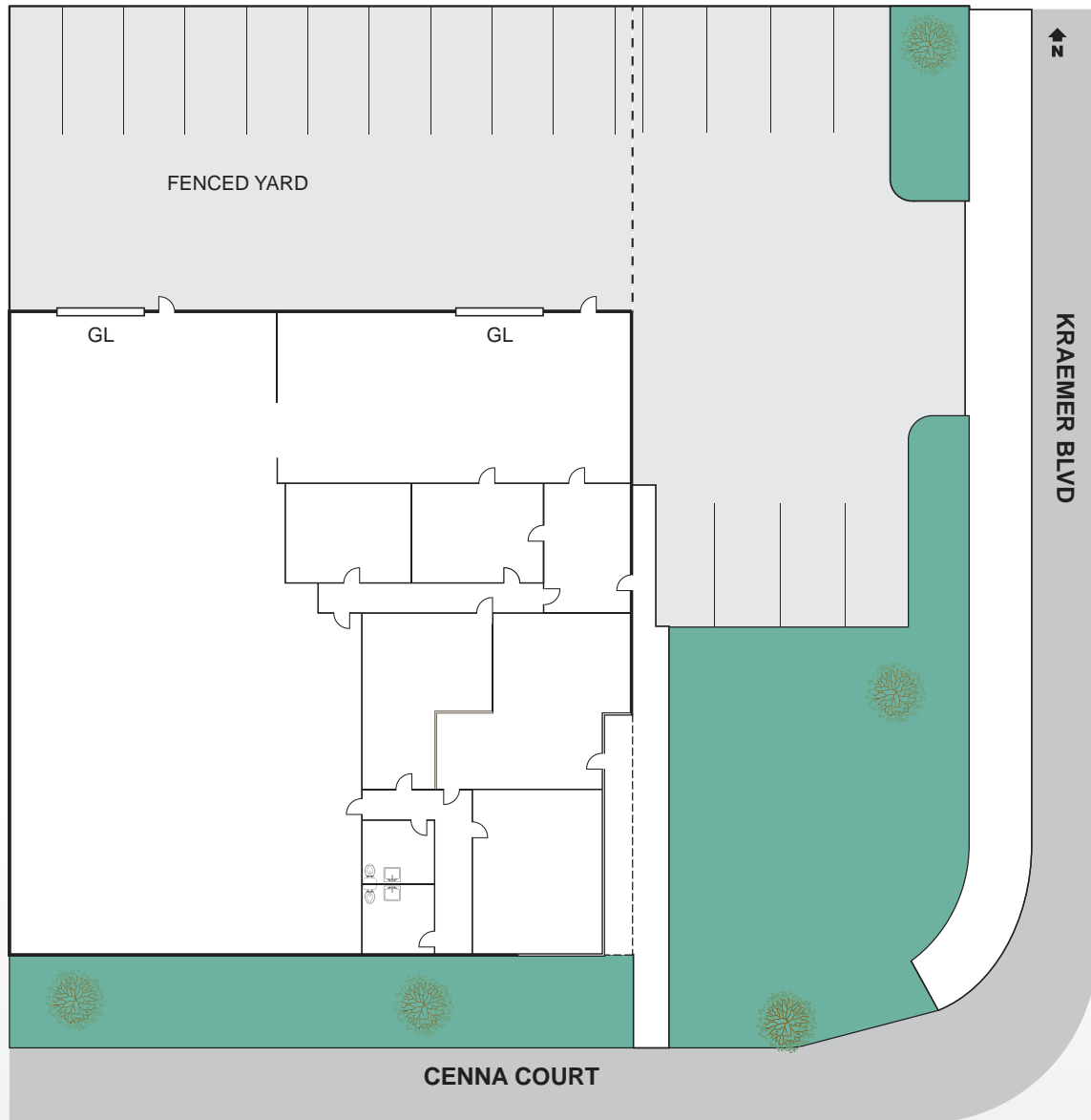
Michael Zehner
Lic #01917963
714.935.2328
mczehner@voitco.com

Voit
REAL ESTATE SERVICES

**THE ZEHNER
DAVENPORT**
INDUSTRIAL GROUP

AVAILABLE FOR LEASE - ± 7,932 SF

1381 N. KRAEMER BLVD.
ANAHEIM, CA



* Site Plan Not to Scale

Southern California's Premier
Real Estate Marketing Team



Michael Zehner
Lic #01917963
714.935.2328
mczehner@voitco.com

Voit
REAL ESTATE SERVICES

**THE ZEHNER
DAVENPORT**
INDUSTRIAL GROUP