

For Lease

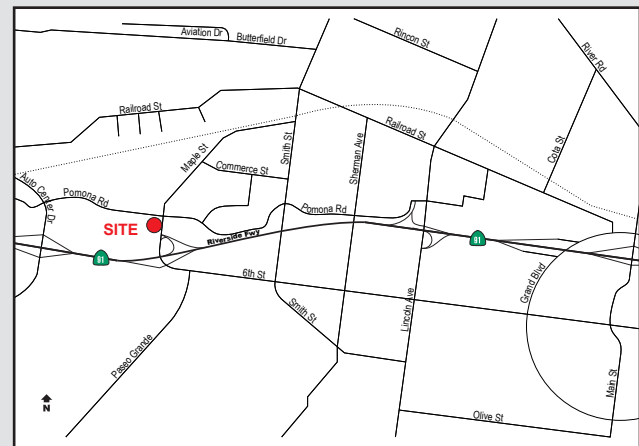
Maple Lewis Business Center 1,600 Square Feet

350 Maple Street, Unit E, Corona, CA



Property Details

- ±1,000 sf Office Space
- Pomona Street Frontage
- High Identity Building Signage
- 2:1 Parking Ratio
- 1 Ground Level Door
- 14' Warehouse Height
- 100 Amps Electrical Service
- Well Maintained Business Park
- Immediate Access to Riverside (91) Freeway



Michael Zehner

Lic #01917963
714.935.2328
mczehner@voitco.com

Ryan Moore

Lic #01821438
714.935.2303
rmoore@voitco.com

2400 E. Katella Avenue, Suite 750, Anaheim, CA 92806
714.978.7880 Phone | 714.978.8329 Fax | Lic #01333376 | www.voitco.com

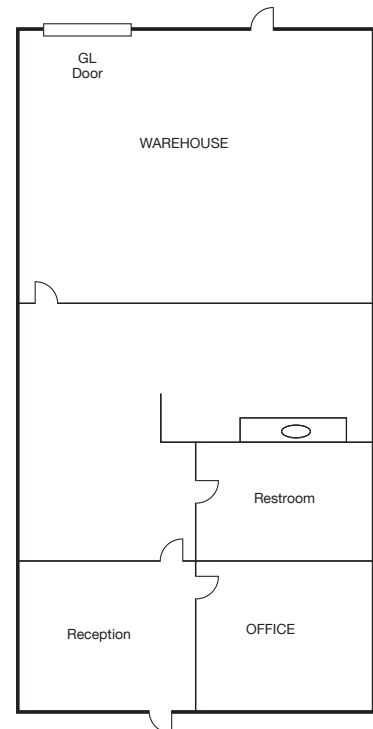
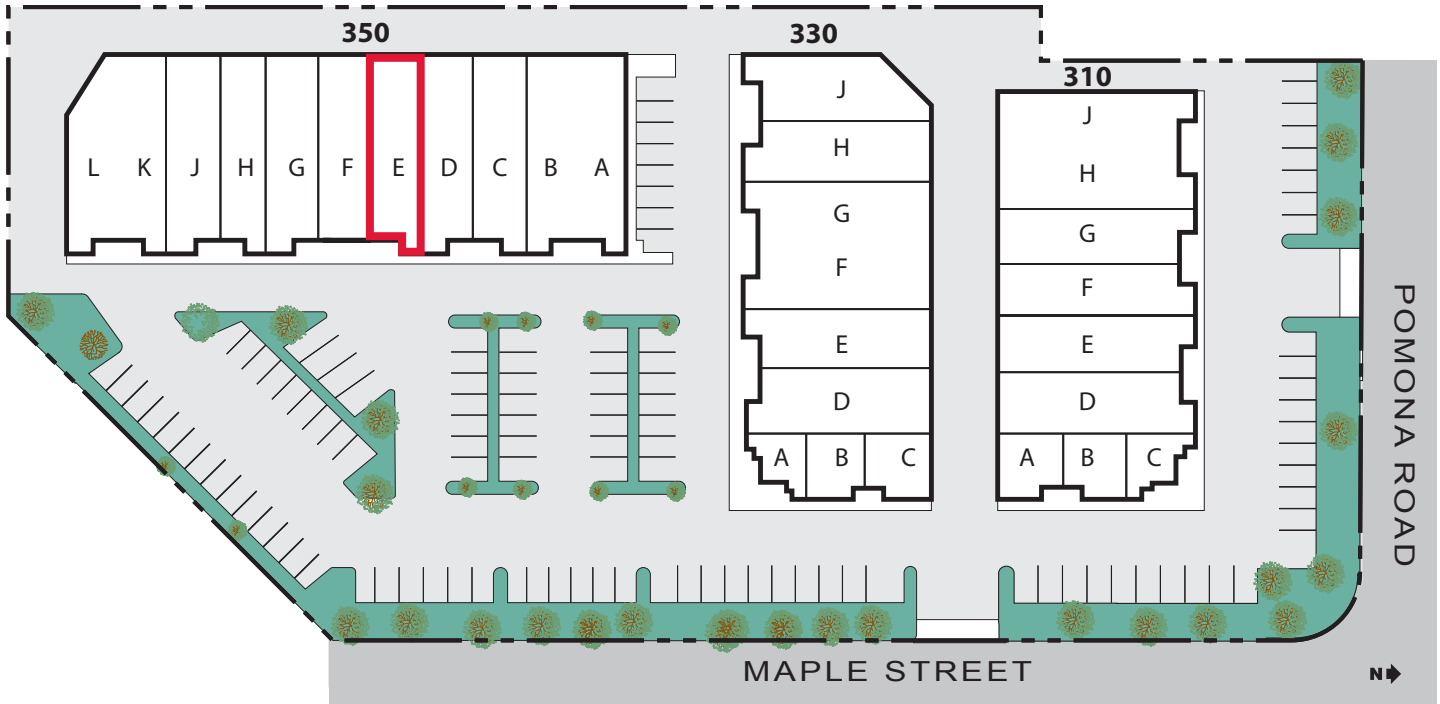
Voit
REAL ESTATE SERVICES

**THE ZEHNER
DAVENPORT**
INDUSTRIAL GROUP

For Lease

Maple Lewis Business Center 1,600 Square Feet

350 Maple Street, Unit E, Corona, CA



Michael Zehner
Lic #01917963
714.935.2328
mczehner@voitco.com

Ryan Moore
Lic #01821438
714.935.2303
rmoore@voitco.com

2400 E. Katella Avenue, Suite 750, Anaheim, CA 92806
714.978.7880 Phone | 714.978.8329 Fax | Lic #01333376 | www.voitco.com

Voit
REAL ESTATE SERVICES

**THE ZEHNER
DAVENPORT**
INDUSTRIAL GROUP