

FOR SALE

±55,362 Square Feet

8401 Page Street, Buena Park



Property Details

- ±11,370 SF Office Space (verify)
- ±2.78 Acre Parcel
- 18'-21' Warehouse Clearance (verify)
- 4 Ground Level Loading Doors
- Fully Refurbished
- Large Fenced Yard
- 800 Amps (verify)
- 147 Parking Spaces
- Fully Fire Sprinklered
- Freeway Visibility/Signage
- Immediate Access to Riverside (91) and Santa Ana (5) Freeways



Seth Davenport

714.935.2376
sdavenport@voitco.com
Lic. #01413387

Mitch Zehner

714.935.2307
mzehner@voitco.com
Lic. #00882464

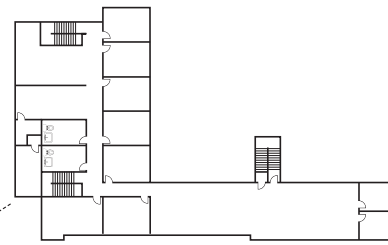
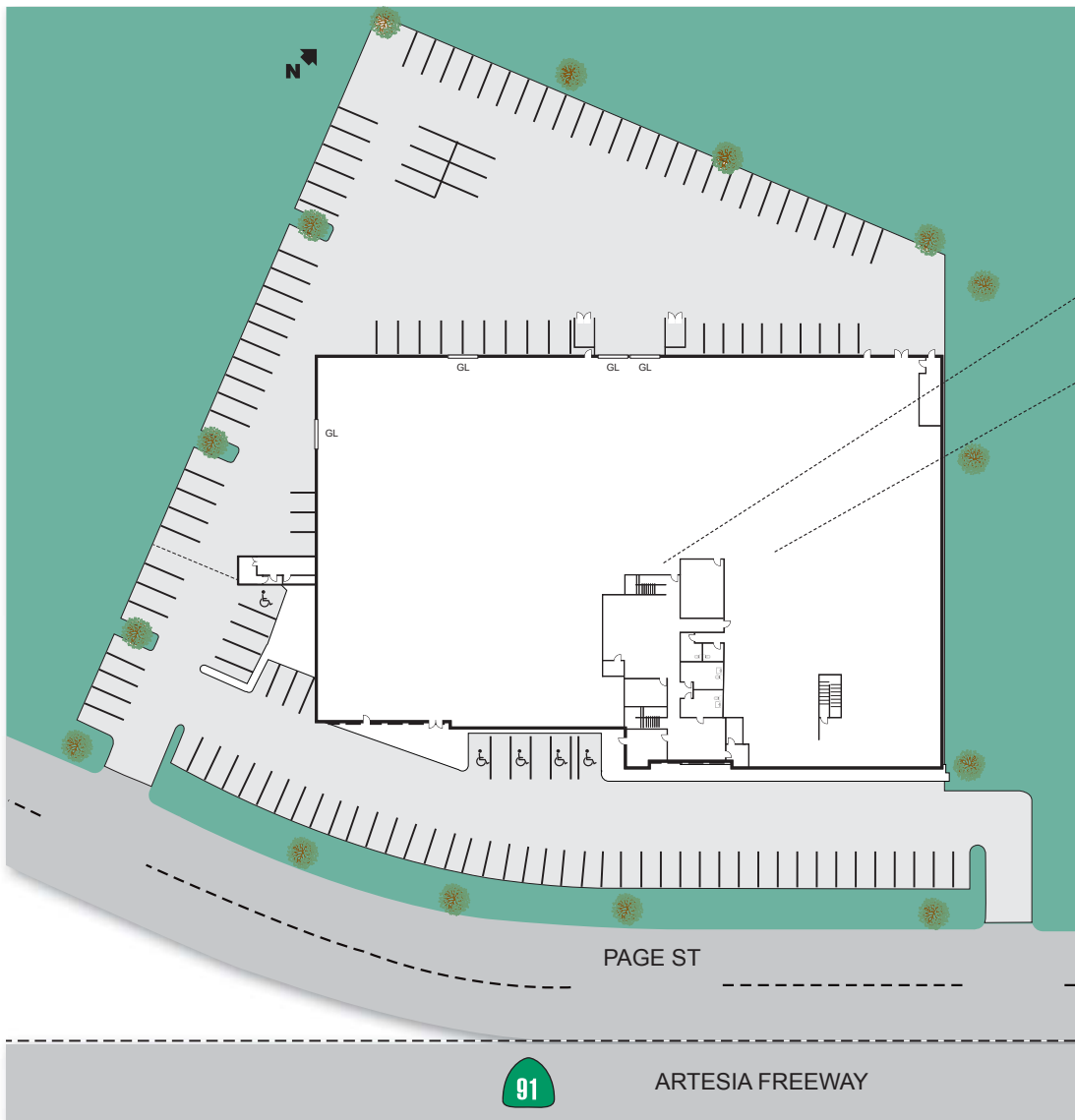
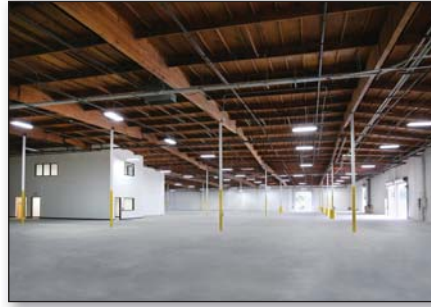
Voit
REAL ESTATE SERVICES

**THE ZEHNER
DAVENPORT**
INDUSTRIAL GROUP

FOR SALE

±55,362 Square Feet

8401 Page Street, Buena Park



Site Plan Not To Scale for Reference On

Seth Davenport
714.935.2376
sdavenport@voitco.com
Lic. #01413387

Mitch Zehner
714.935.2307
mzehner@voitco.com
Lic. #00882464

Voit
REAL ESTATE SERVICES

**THE ZEHNER
DAVENPORT
INDUSTRIAL GROUP**

2400 E. Katella Avenue, Suite 750, Anaheim, CA 92806
714.978.7880 Phone | 714.978.8329 Fax | Lic #01333376 | voitco.com | zehnerdavenport.com

Licensed as a Real Estate Broker by the CA Bur of Real Estate. The information contained herein has been obtained from sources we deem reliable. While we have no reason to doubt its accuracy, we do not guarantee it. ©2015 Voit Real Estate Services, Inc. All Rights Reserved. Real People. Real Solutions.® is a registered trademark of Voit Real Estate Services.