

# 1470 KIMBERLY AVENUE, FULLERTON

Kimberly Business Center

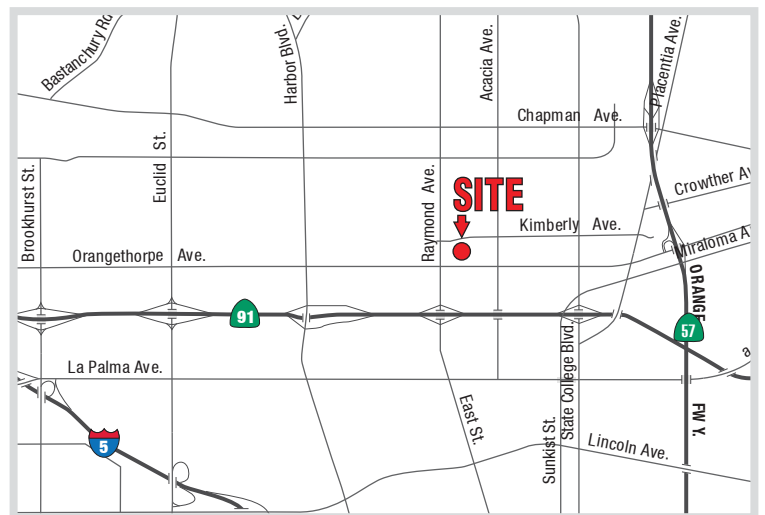
**For Sale**

**±24,259 SF**



## BUILDING FEATURES

- ±24,259 SF High Image Industrial Building
- ±2,664 SF of 2 Story High Image Office
- ±24' Warehouse Clearance
- 800 Amps 277/480 Volt Electrical
- 4 Ground Level Loading Doors
- Fully Fire Sprinklered
- Well Maintained Business Park
- Immediate Access to Riverside 91 & Orange 57 Freeways



### SETH DAVENPORT

Executive Vice President  
714.935.2376  
Lic. #01413387

### MITCH ZEHNER

Executive Vice President  
714.935.2307  
Lic. #00882464

**Voit**  
REAL ESTATE SERVICES

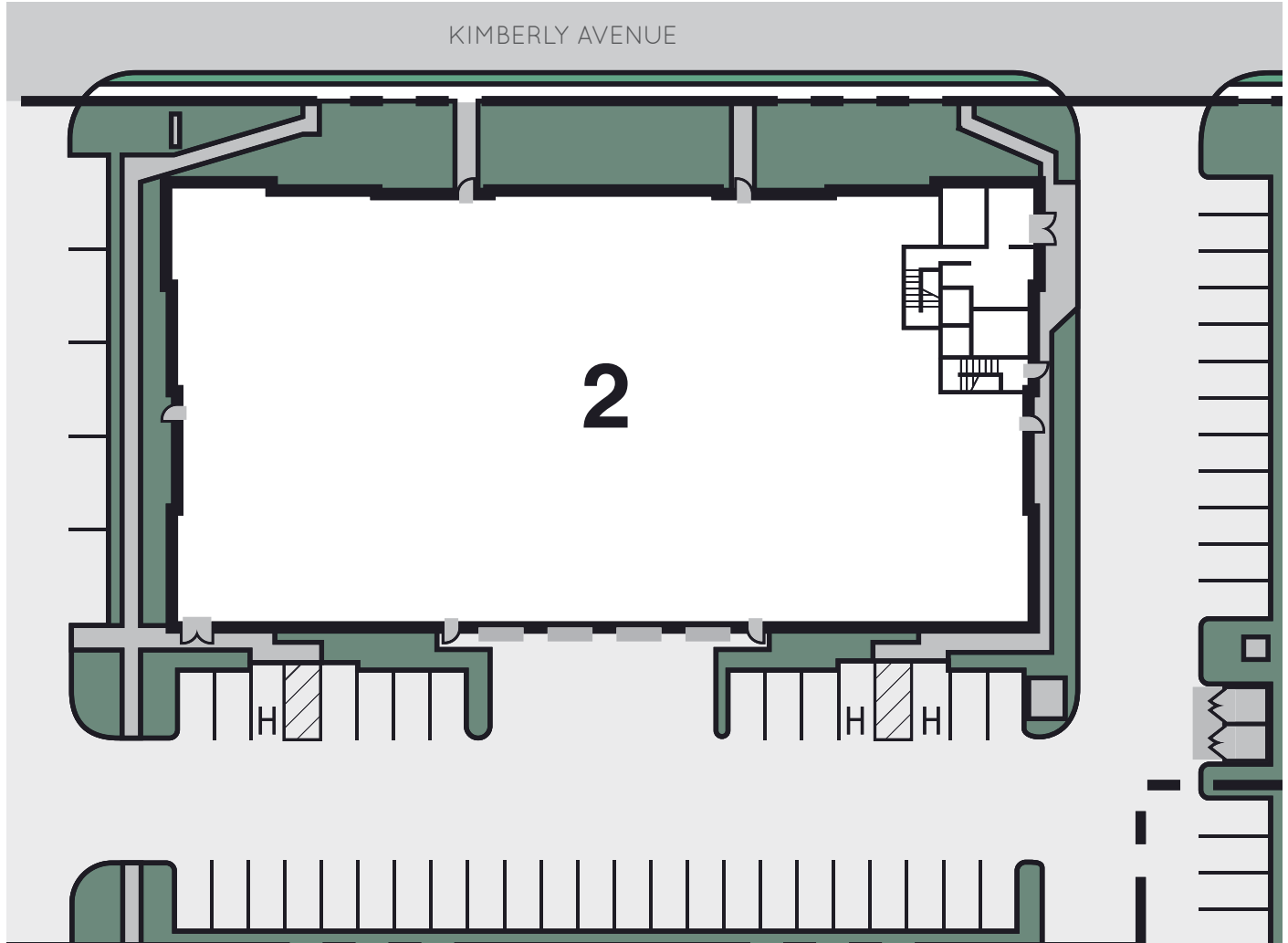
**THE ZEHNER  
DAVENPORT  
INDUSTRIAL GROUP**

# 1470 KIMBERLY AVENUE, FULLERTON

Kimberly Business Center

**For Sale**

**±24,259 SF**



## SETH DAVENPORT

Executive Vice President

714.935.2376

Lic. #01413387

## MITCH ZEHNER

Executive Vice President

714.935.2307

Lic. #00882464

**Voit**  
REAL ESTATE SERVICES

**THE ZEHNER  
DAVENPORT**  
INDUSTRIAL GROUP