

FOR SALE

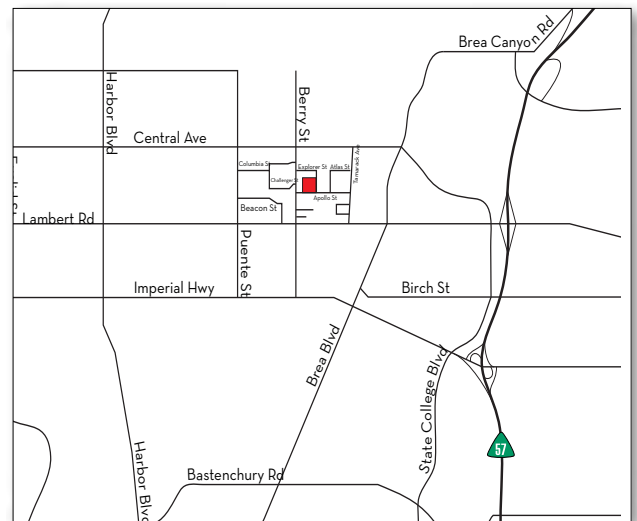
±6,618 Square Feet



580 Berry St., Brea

Property Details

- Freestanding Industrial Building
- ± 1,000 Square Feet of Office Space
- 1 Ground Level Loading Door
- 16' Warehouse Ceiling
- Berry Street Frontage
- 400 Amps 277/480 Volt
- 2:1 Parking Ratio
- Fire Sprinklered
- Immediate Access to Orange (57) Freeway
- Highly Desirable North Orange County location with ideal proximity to infrastructure, ports, airports and a strong labor pool
- Building Leased Unitil Nov 30, 2018



Seth Davenport

714.935.2376

sdavenport@voitco.com

Lic.#01413387

Mitch Zehner

714.935.2307

mzehner@voitco.com

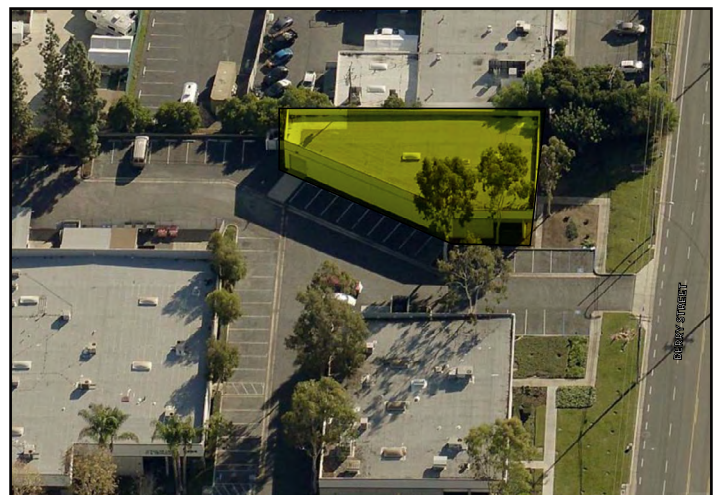
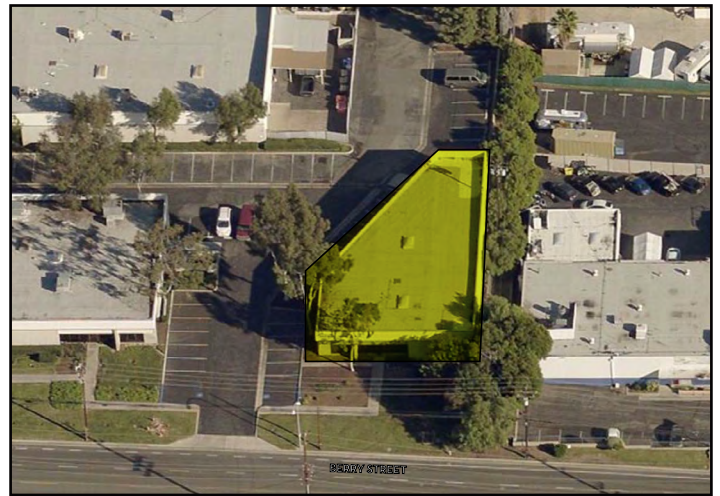
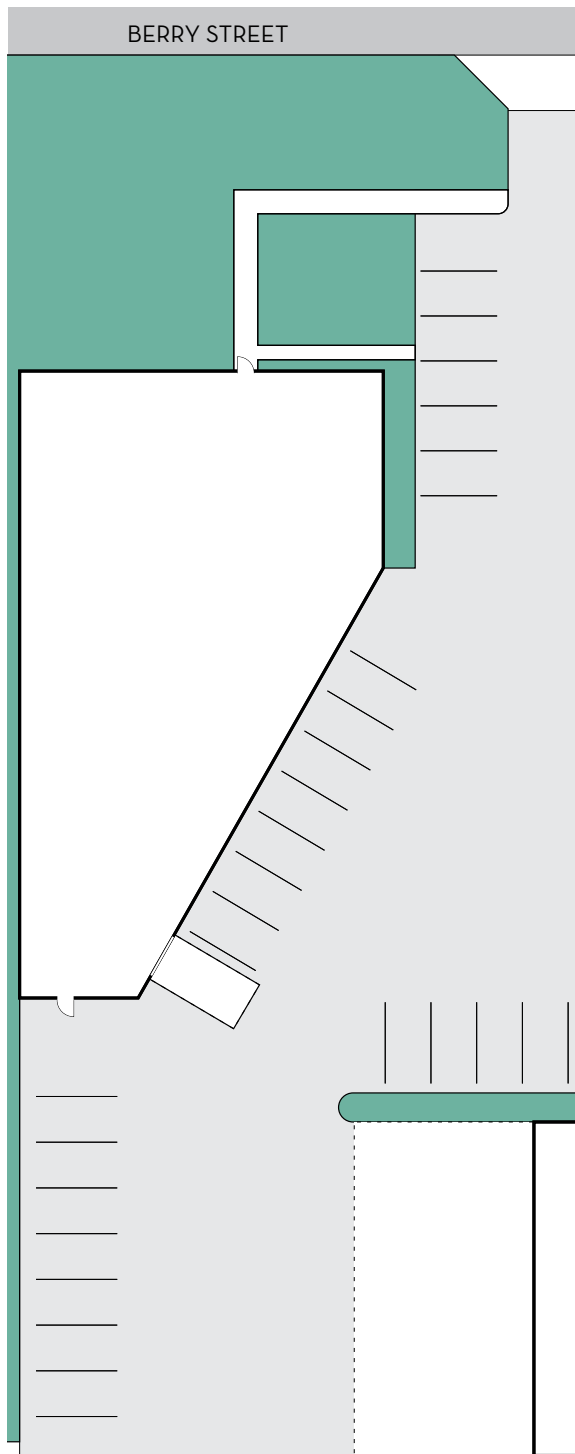
Lic.#00882464

Voit
REAL ESTATE SERVICES

**THE ZEHNER
DAVENPORT**
INDUSTRIAL GROUP

FOR SALE

±6,618 Square Feet



*Floor Plan Not to Scale

Seth Davenport

714.935.2376

sdavenport@voitco.com

Lic.#01413387

Mitch Zehner

714.935.2307

mzehner@voitco.com

Lic.#00882464

Voit
REAL ESTATE SERVICES

**THE ZEHNER
DAVENPORT**
INDUSTRIAL GROUP

2400 E. Katella Avenue, Suite 750, Anaheim, CA 92806 | 714.978.7880 Phone | 714.978.8329 Fax | Lic #01991785 | voitco.com | zehnerdavenport.com

Licensed as Real Estate Salesperson by the CA Bur of Real Estate. The information contained herein has been obtained from sources we deem reliable. While we have no reason to doubt its accuracy, we do not guarantee it. ©2018 Voit Real Estate Services, Inc. All Rights Reserved. Real People. Real Solutions.® is a registered trademark of Voit Real Estate Services. Lic #01991785.