

±35,200 SF FOR LEASE



1700-1702 E. VIA BURTON STREET, ANAHEIM

FEATURES:

- Excellent Manufacturing Facility
- ±5,915 Square Feet of Office Space
- 5 Grade Level Loading Doors
- 18' Warehouse Clearance
- Large Fenced Yard
- Corner Location
- 1,600 AMPS; 277/480 Volts (Verify)
- Fully Fire Sprinklered
- Divisible Building
- Excellent Access to 91 & 57 Freeways
- 400 Amp Electrical Service



SETH DAVENPORT
Senior Vice President
714.935.2376
sdavenport@voitco.com
Lic#01413387

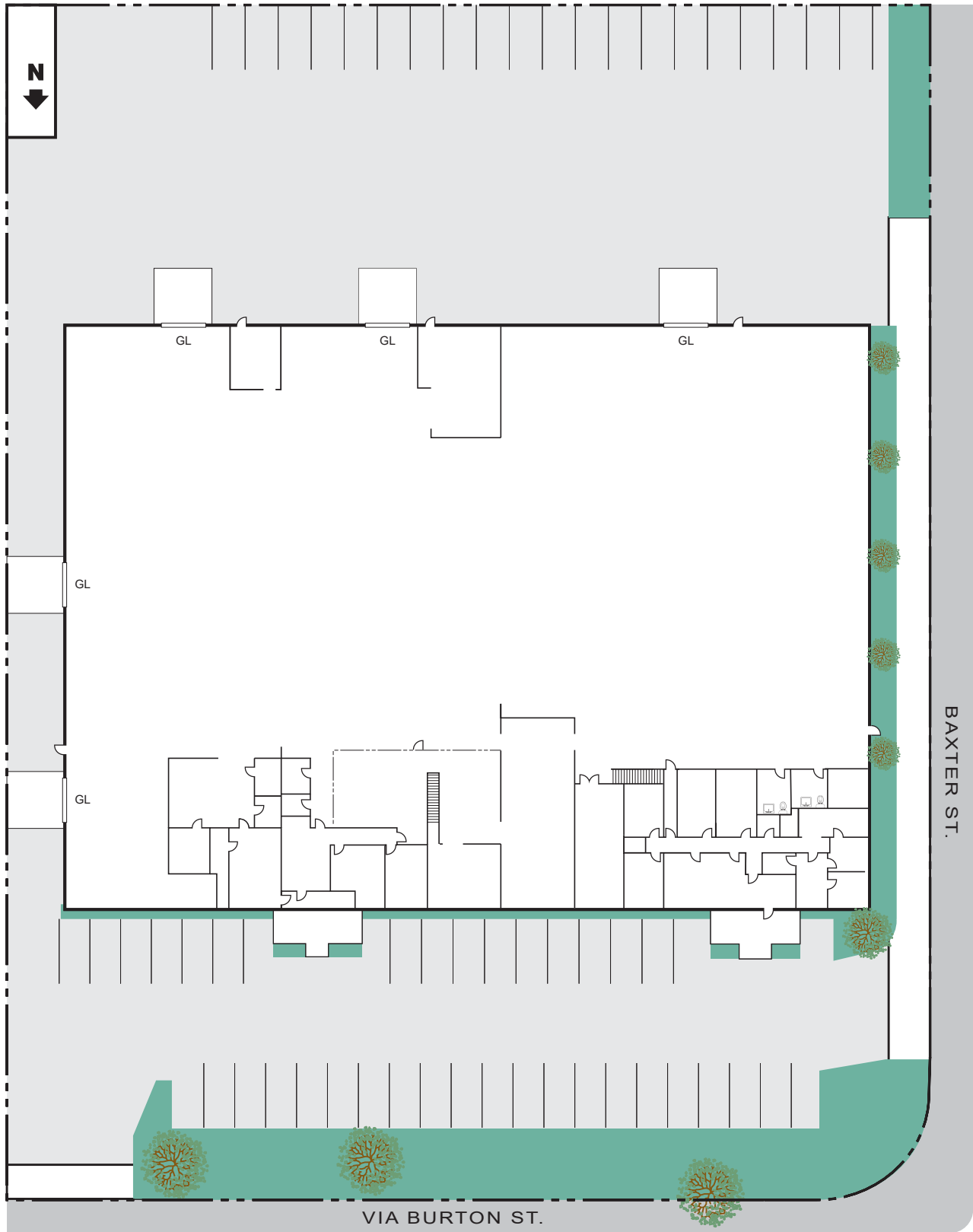
MITCH ZEHNER
Executive Vice President
714.935.2307
mzehner@voitco.com
Lic#00882464

Voit
REAL ESTATE SERVICES

**THE ZEHNER
DAVENPORT**
INDUSTRIAL GROUP

1700-1702 E. VIA BURTON ST
ANAHEIM

±35,200 SF FOR LEASE



SETH DAVENPORT
Senior Vice President
714.935.2376
sdavenport@voitco.com
Lic#01413387

MITCH ZEHNER
Executive Vice President
714.935.2307
mzehner@voitco.com
Lic#00882464

Voit
REAL ESTATE SERVICES

THE ZEHNER
DAVENPORT
INDUSTRIAL GROUP

2400 E. Katella Avenue, Suite 750, Anaheim, CA 92806 | 714.978.7880 • 714.978.8329 Fax | zehnerdavenport.com

Licensed as Real Estate Salespersons by the CA Bar of Real Estate. The information contained herein has been obtained from sources we deem reliable. While we have no reason to doubt its accuracy, we do not guarantee it. ©2018 Voit Real Estate Services, Inc. All Rights Reserved. License #0199785