

22700

SAVI RANCH PARKWAY

YORBA LINDA | CALIFORNIA



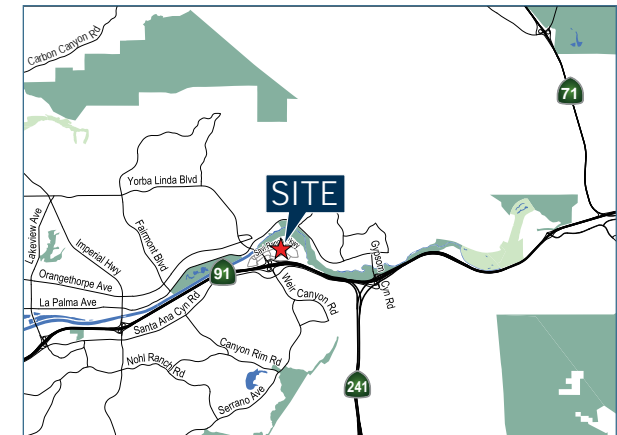
FOR LEASE | ±41,455 SF

Voit
REAL ESTATE SERVICES

ZEHNER HILL
INDUSTRIAL GROUP

PROPERTY DETAILS

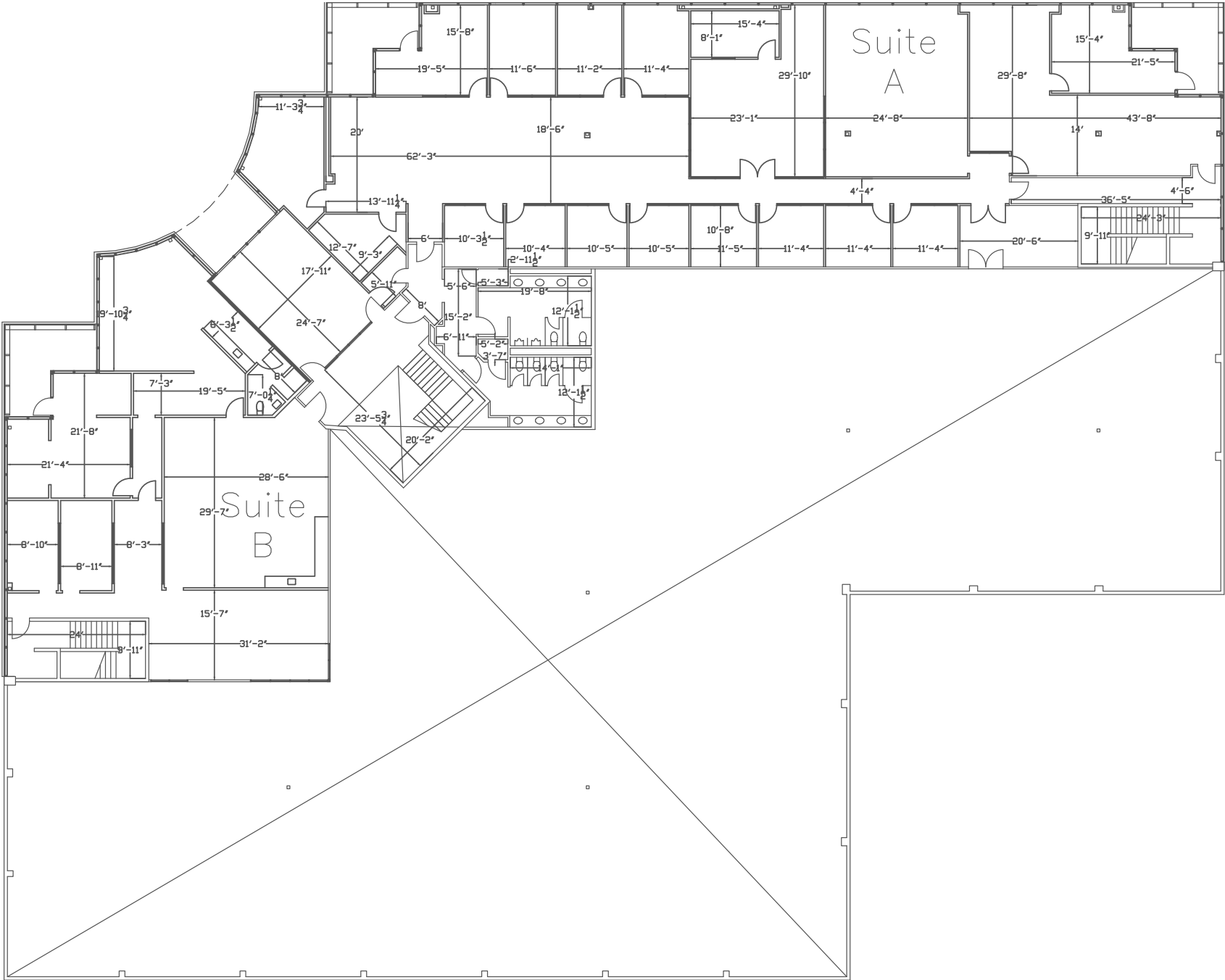
- $\pm 41,455$ SF Corporate Headquarters Flex/R&D Building
- $\pm 23,772$ SF of 2-Story Office Space
- $\pm 17,683$ SF of Warehouse Space
- 24' Warehouse Clear Height
- 1,200 Amps of Power
- 2 Ground Level Loading Doors
- $\pm 3.5:1,000$ Parking Ratio
- Fire Sprinklers
- Located within Savi Ranch - Yorba Linda's Major Job Center and Retail Destination
- Walking Distance to Amenities
- Irreplaceable Location in Yorba Linda with excellent access to the Riverside (91) Freeway and the (241) Toll Road



[illegible]

1ST FLOOR

FLOOR PLANS

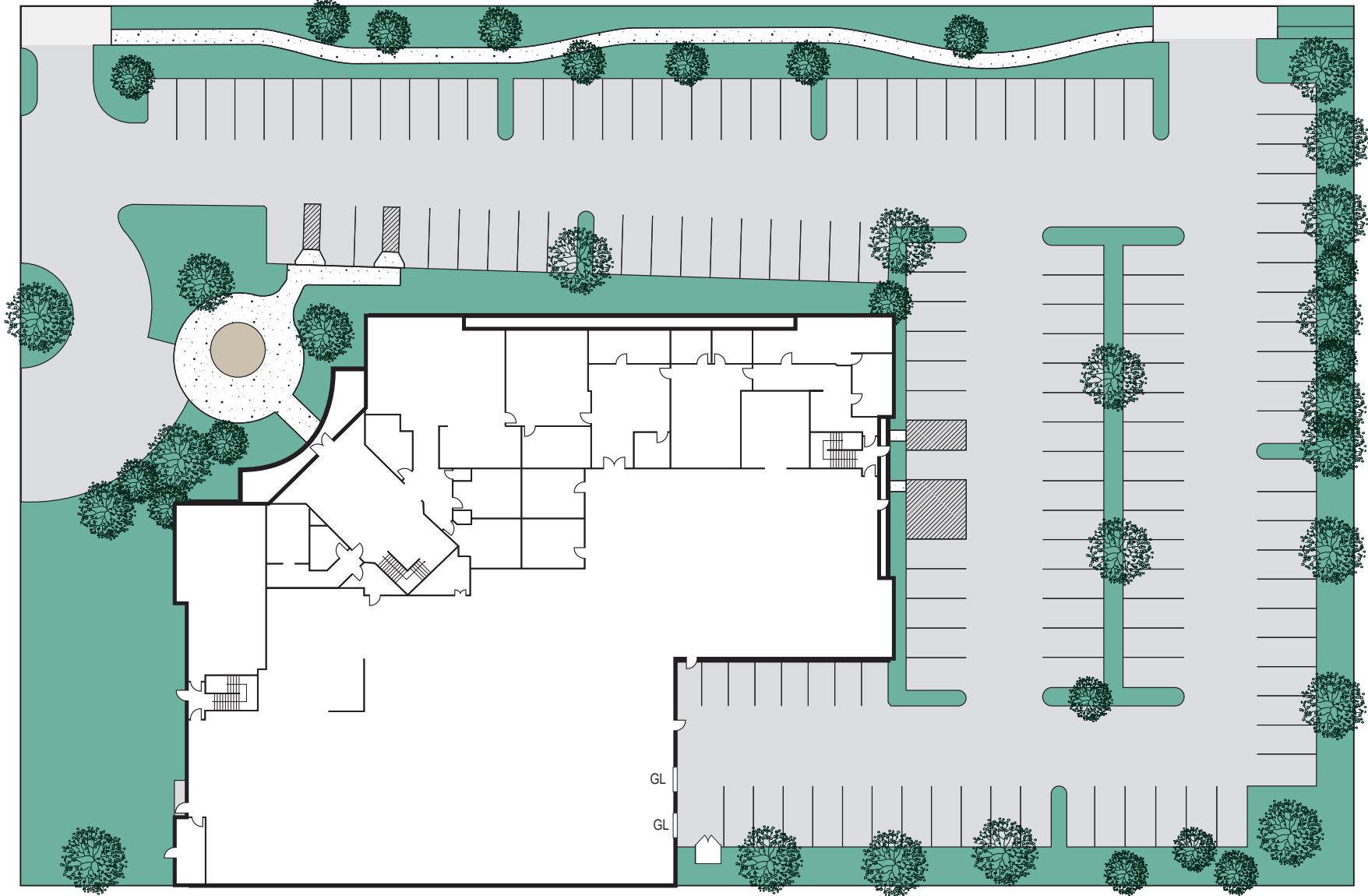


2ND FLOOR



SITE PLAN

SAVI RANCH PKWY



ADAM HILL
SENIOR VICE PRESIDENT

714.935.2311
AHill@voitco.com
Lic. #01970562

MITCH ZEHNER
EXECUTIVE VICE PRESIDENT

714.935.2307
MZehner@voitco.com
Lic. #00882464

MICHAEL ZEHNER
SENIOR VICE PRESIDENT

714.935.2328
McZehner@voitco.com
Lic. #01917963

Voit
REAL ESTATE SERVICES

ZEHNER HILL
INDUSTRIAL GROUP

2020 Main Street | Suite 100
Irvine, California 92614
949.851.5100 | www.VoitCo.com

The information contained herein has been obtained from sources we deem reliable. While we have no reason to doubt its accuracy, we do not guarantee it. Licensed as Real Estate Salespersons by the DRE. ©2025 Voit Real Estate Services, Inc. All Rights Reserved. License #01991785.