

1702

ROSSLYNN AVE
FULLERTON | CALIFORNIA

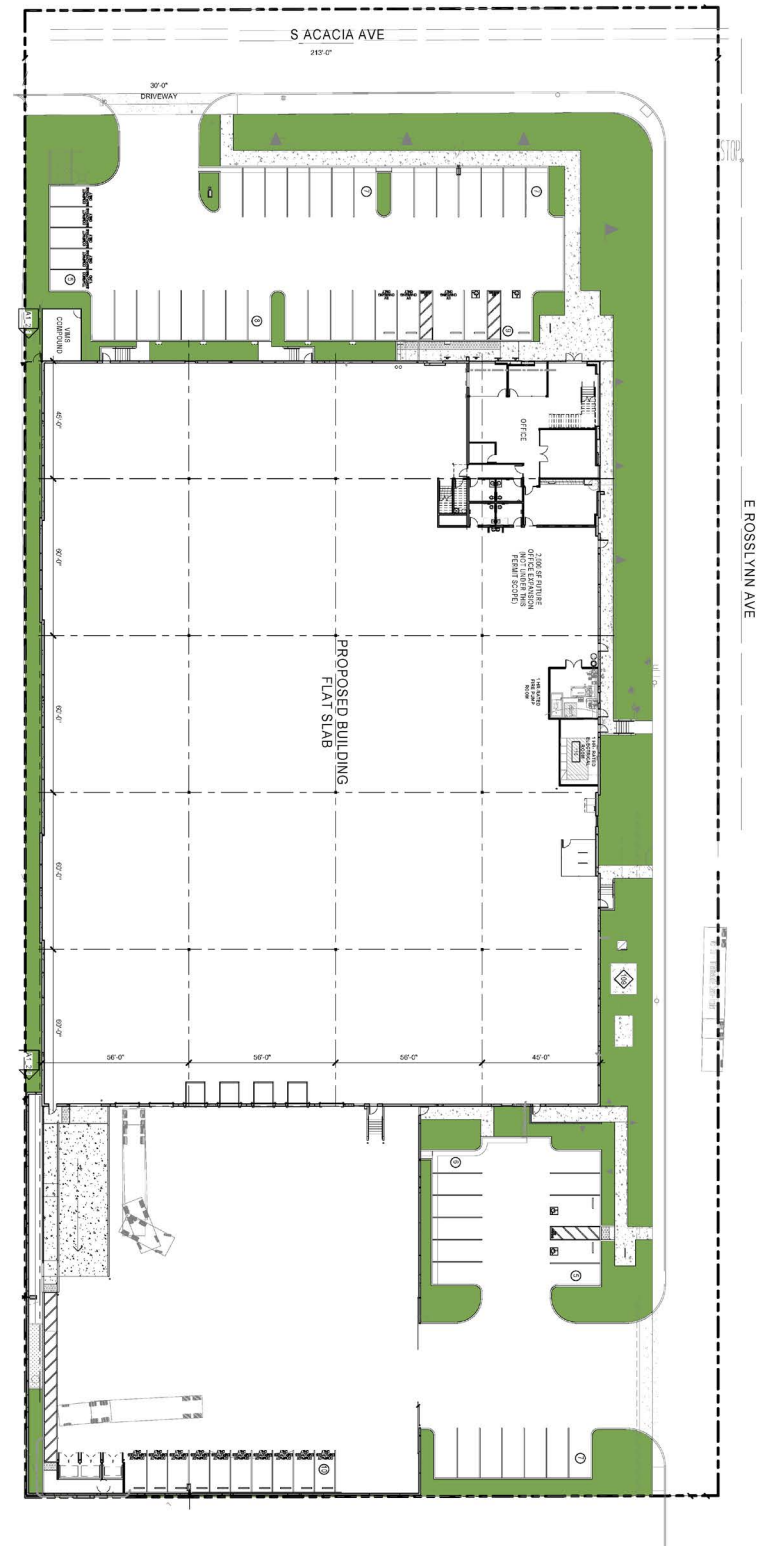
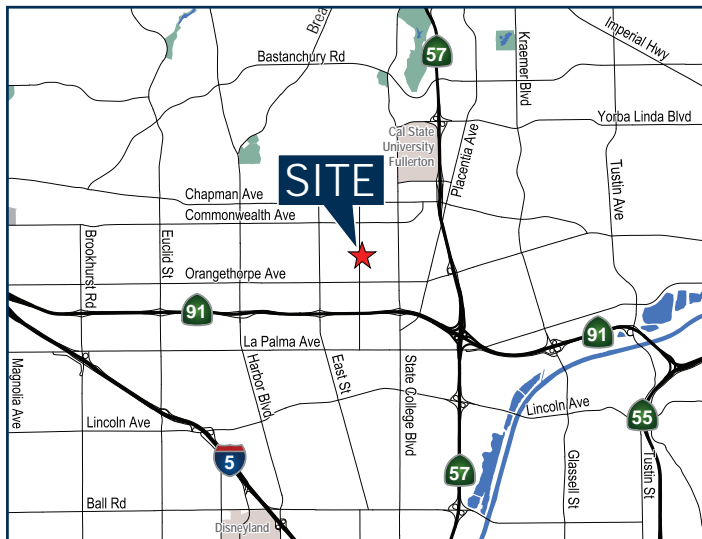
FOR SALE / LEASE | 63,705 SF

Voit
REAL ESTATE SERVICES

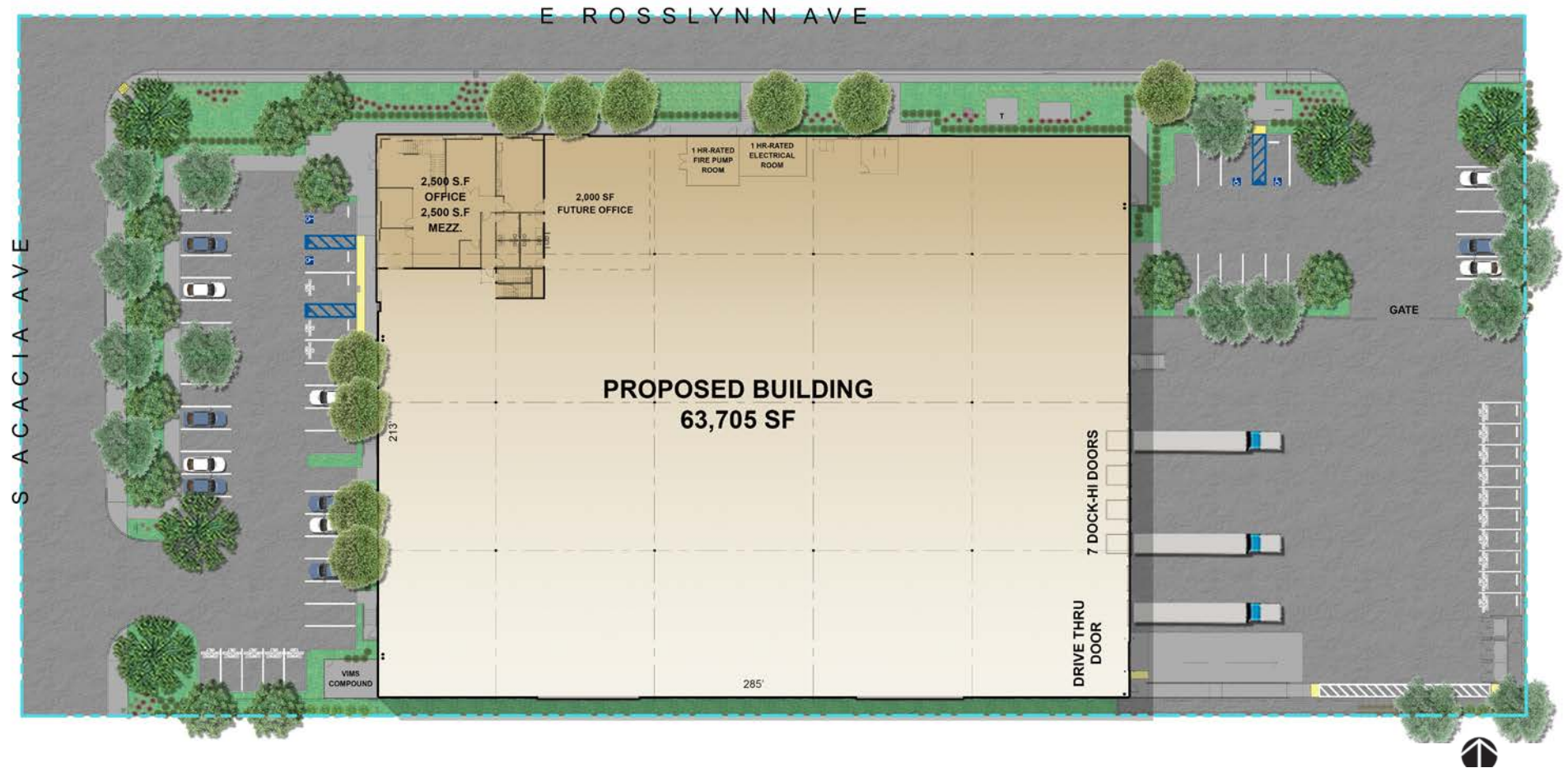
ZEHNER HILL
INDUSTRIAL GROUP

PROPERTY DETAILS

- Brand New State of the Art Building
- ±5,000 SF of Office Space
- Potential of Additional 2,000 SF of Office Space (Not under this permit scope)
- ±58,705 SF of Warehouse Space
- 1 Ground Level Loading Door
- 7 Dock High Loading Doors
- Column Spacing: 60' x 56'
- 36' Warehouse Clear Height
- 64 Parking Spaces
- 2,000 Amp: 277/480 Volt Electrical
- Large Fenced Yard
- ESFR Sprinkler System
- Excellent Freeway Access to Orange (57) & Riverside (91)
- Situated on a 2.9 Acre Parcel



SITE PLAN



MITCH ZEHNER EXECUTIVE VICE PRESIDENT

714.935.2307
MZehner@voitco.com
Lic. #00882464

MICHAEL ZEHNER SENIOR VICE PRESIDENT

714.935.2328
McZehner@voitco.com
Lic. #01917963

ADAM HILL SENIOR VICE PRESIDENT

714.935.2311
AHill@voitco.com
Lic. #01970562

Voit
REAL ESTATE SERVICES

ZEHNER HILL
INDUSTRIAL GROUP